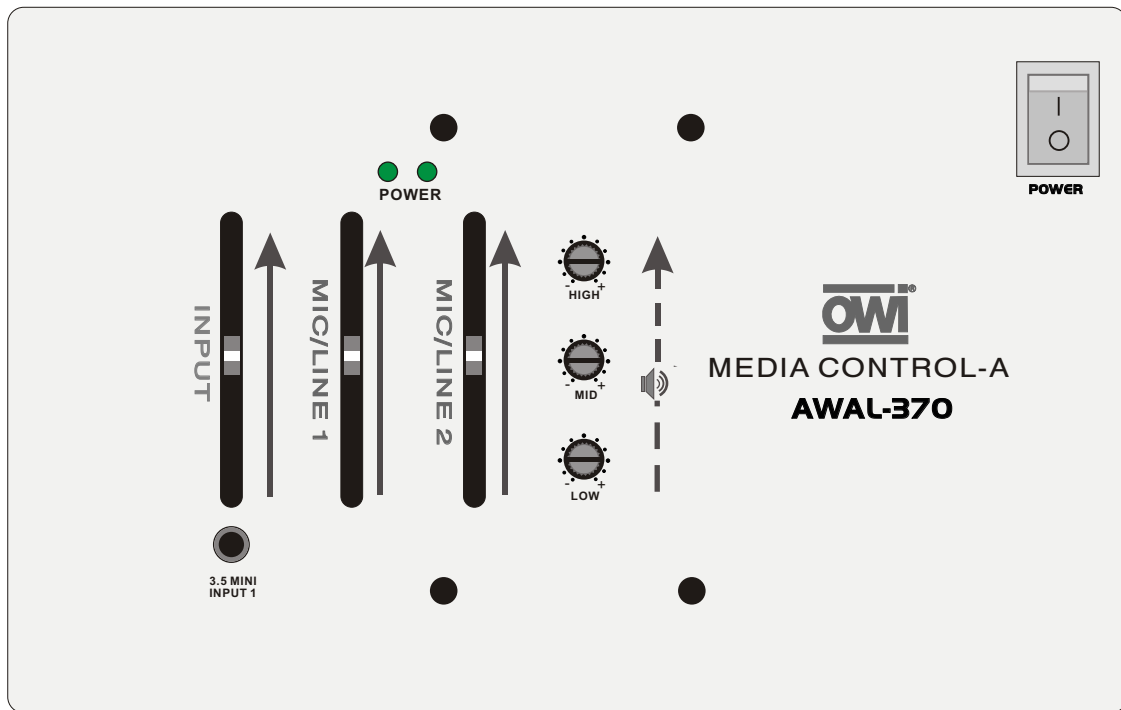


USER'S MANUAL

WALL MOUNT POWERED MIXER AWAL-370



PLEASE KEEP THIS MANUAL FOR FUTURE REFERENCE

SAFETY PRECAUTIONS!

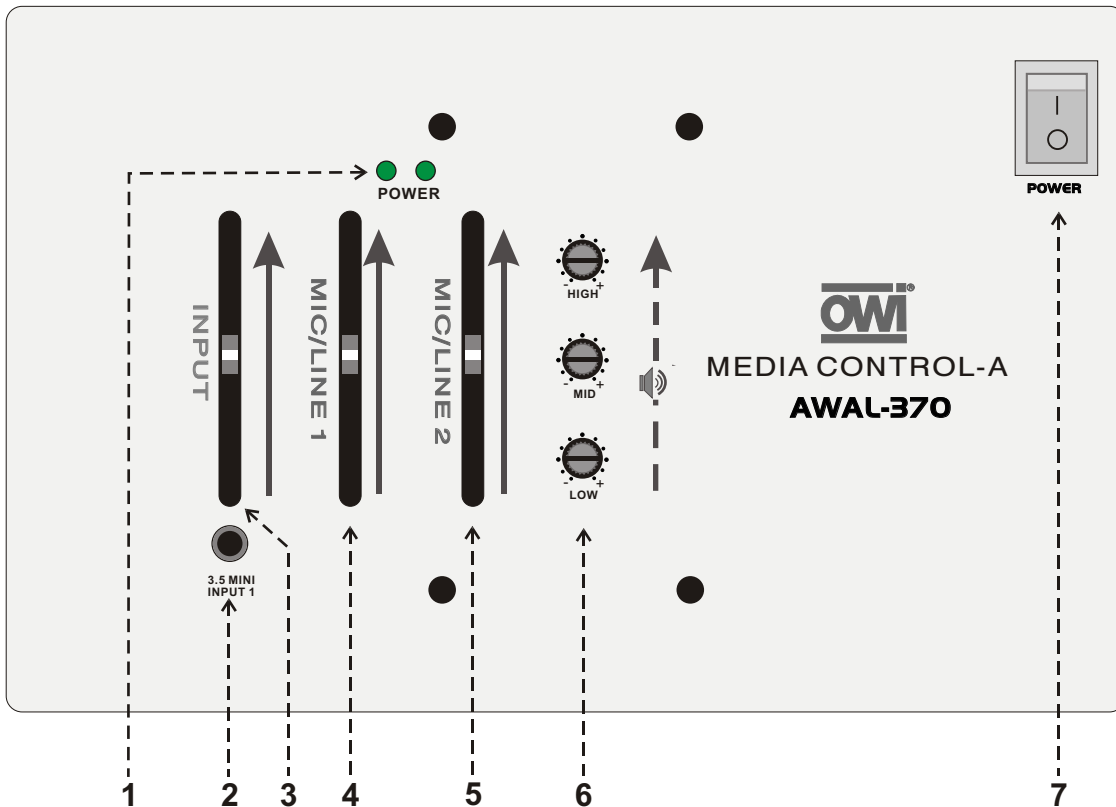
PRECAUTIONS

- Do not open and modify the unit under any circumstances. Doing so may cause fire or electrical shock. No user-serviceable parts are inside. Refer all servicing to a qualified service personnel.
- Never put burning object on the device, such as burning candle.
- Never put object filled with liquid on the device, such as vase etc.
- Do not allow water or liquids to be spilled into this unit, otherwise, it will cause a fire or electrical shock.
- Keep far from high temperature object ,damp, dense dust and powerful electromagnetic place.
- Please use the original packaging if the device is to be transported.
- Never remove the serial barcode from the device as this would make the guarantee void.
- Unauthorized modifications on the speaker-system are forbidden due to safety reasons!
- If this device will be operated in any way different to the one described in this manual, the product may suffer damages and the guarantee becomes void.
- If the unit is damaged or functions abnormally, turn off the unit and notify your dealer immediately for repair.

NOTES

- Read all documentation before operating the equipment. Retain all documentation for further reference.
- Never clean the products with chemicals, clean with soft cloths.
- Mains voltage must be correct and the same as that printed on the adapter.
- Connect the 24 V power supply orange phoenix terminal to the adapter in the product box. The positive and negative poles of the orange phoenix terminal should be consistent with the output screw of the adapter.
- Please turn off the power switch when pull off the power cable and signal cable.

Front Panel Instruction:



1. Power LEDs

When the PA-amplifier is on, the **POWER** LEDs are illuminated, so the user may be aware of it.

2. 3.5 Mini Input 1

The 3.5 Mini Input 1 accepts a 3.5 MM stereo or TS plug with line-level audio signal, such as: mixer, recorder, CD/DVD player, etc.

3. Input 1 Volume Fader

This fader determines the volume of the 3.5 Mini input channel, and provides a visual indication of the channel volume.

4. MIC/LINE 1 Volume Fader

This fader determines the volume of the MIC/LINE 1 input channel, and provides a visual indication of the channel volume.

5. MIC/LINE 2 Volume Fader

This fader determines the volume of the MIC/LINE 2 input channel, and provides a visual indication of the channel volume.

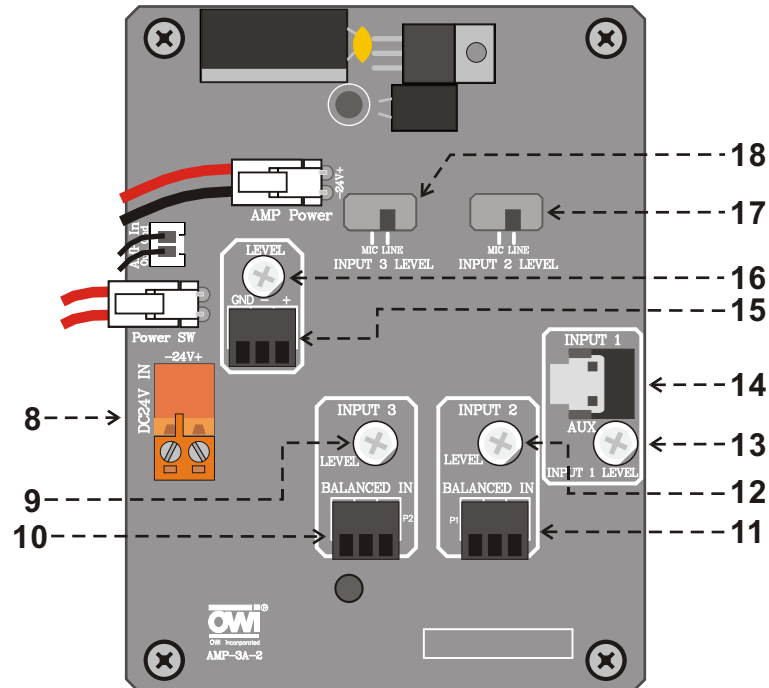
6. 3-BAND EQ Controls

Rotate the 3 adjusters to boost or reduce high/middle/low frequency of the main mix channel. The adjusters have shelving response giving 12 dB of boost or reduce at 10k Hz / 2.5k HZ / 80 Hz.

7. Power Switch

Depress the position "I" of the power switch to turn on the amplifier and depress the position "O" of the power switch to turn off the amplifier.

Rear Panel Instruction:



8. DC24V IN Terminal

Connect the **DC24V IN** orange phoenix terminal to the adapter in the product box. The positive and negative poles of the orange phoenix terminal should be consistent with the output screw of the adapter.

9. Input 3 Gain Control

This adjuster to control input 3 channel gain.

10. Input 3 Terminal

This black terminal accepts MIC or line level signal with balanced or unbalanced connection.

11. Input 2 Terminal

This black terminal accepts MIC or line level signal with balanced or unbalanced connection.

12. Input 2 Gain Control

This adjuster to control input 2 channel gain.

13. Input 1 Gain Control

This adjuster to control input 1 channel gain.

14. Input 1 Socket

The 3.5 MM socket accepts a 3.5 MM stereo or TS plug with line-level audio signal, such as: mixer, recorder, CD/DVD player, etc.

Note: If the 3.5 Mini Input 1 on the front panel has been plugged in, the Input 1 socket on the rear panel will not work.

Rear Panel Instruction:

15. BAL Out Terminal

This black terminal send a balanced Pre-amp output signal.

16. BAL Out Level Control

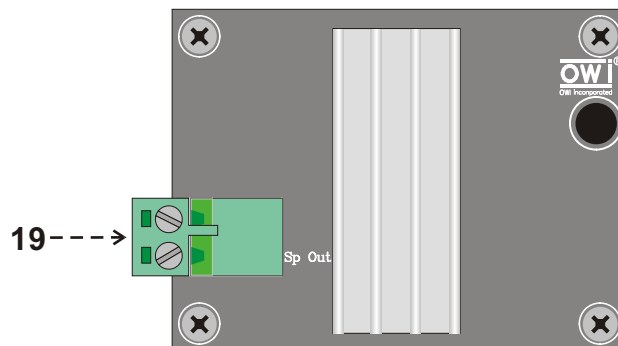
The adjuster to control BAL Output level.

17. Input 2 Level Selector

To set MIC or line level for MIC/LINE 1 input channel.

18. Input 3 Level Selector

To set MIC or line level for MIC/LINE 2 input channel.



19. Speaker Output Terminal

The speaker output terminal for connecting 70 V PA-speakers only. Do not connect 4-16ohm passive speaker-system, doing so may cause equipment failure.

Feature:

- 2 Mic/Line inputs with selectors and gain adjustments in the back
- 1 Line input with 3.5 MM mini jacks on both front panel and back, gain adjusters on back
- 3 input channels with volume faders on front panel
- Balanced Pre-amp output on back with separate gain adjuster
- 3-Band EQ controls(+/-12 dB) on main mix
- Rated power out: 60W/70V
- Power supply: DC 24 V phoenix terminal

Technical Specifications:

Input 1(3.5 MM mini input)		400 mV, 10k ohm
MIC/Line input 1&2	MIC	16 mV, 600 ohm
	Line	175 mV, 10k ohm
BAL output		1 V
HIGH control		10 k Hz, +/- 12 dB
MID control		2.5 k Hz, +/- 12 dB
LOW control		80 Hz, +/- 12 dB
Frequency Response		BAL output: 20 Hz - 18 k Hz
		Speaker output: 60Hz - 16 k Hz
Distortion		< 0.5%
Power output		60 W / 70 V, RMS

WARRANTY

OWI INCORPORATED

17141 Kingsview Ave.

Carson, CA 90746

Date Purchased: _____

Model Number: _____

(Keep this part for your records)

----- CUT AND MAIL -----



OWI INCORPORATED

17141 Kingsview Ave.

Carson, CA. 90746

LIMITED ONE YEAR WARRANTY

Model Number: _____

Model Name: _____

Serial No. _____

Date of Purchase: Month: _____ Day _____ Year _____

Owner's Name: _____

Address: _____ City: _____ State: _____ Zip: _____

Dealer's Name: _____ City: _____ State: _____

Purchased from (Please check one):

Video ___ Electronic ___ Mail Order ___ Mass Merchandiser ___ Installer ___

Other (Please specify) _____

Remarks: _____
